

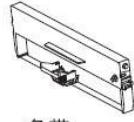

光盘



联机电缆



打印机



色带



电源线



说明书



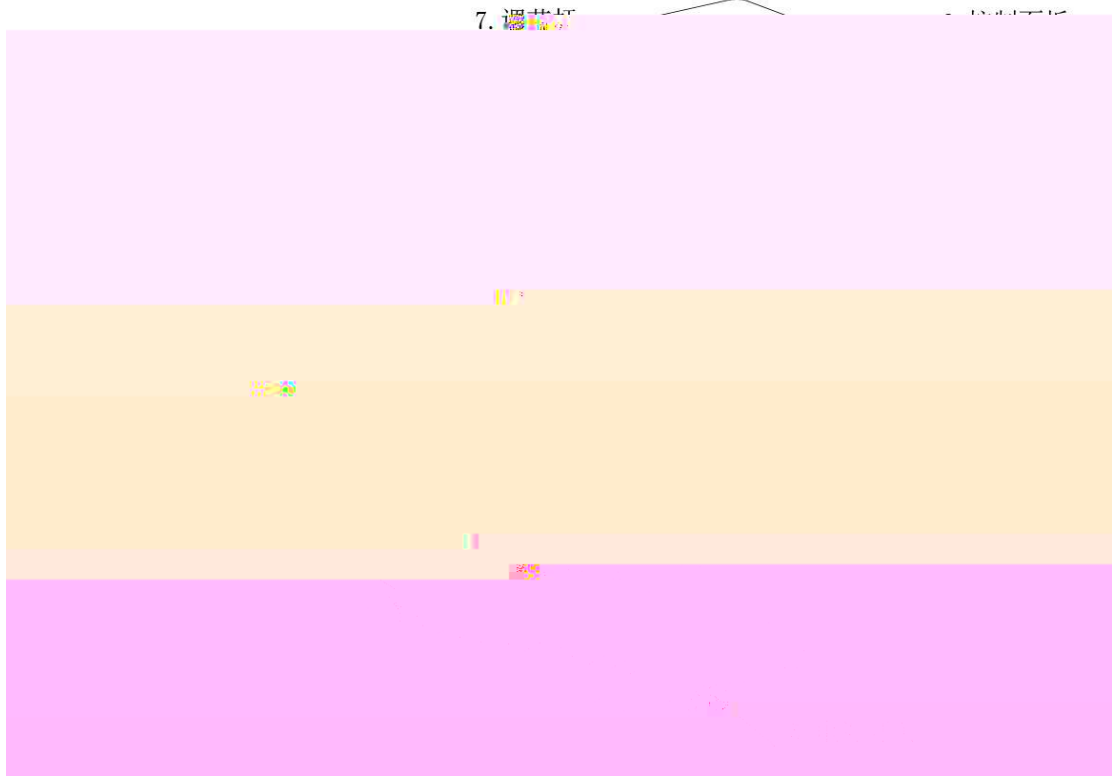
保修卡



合格证

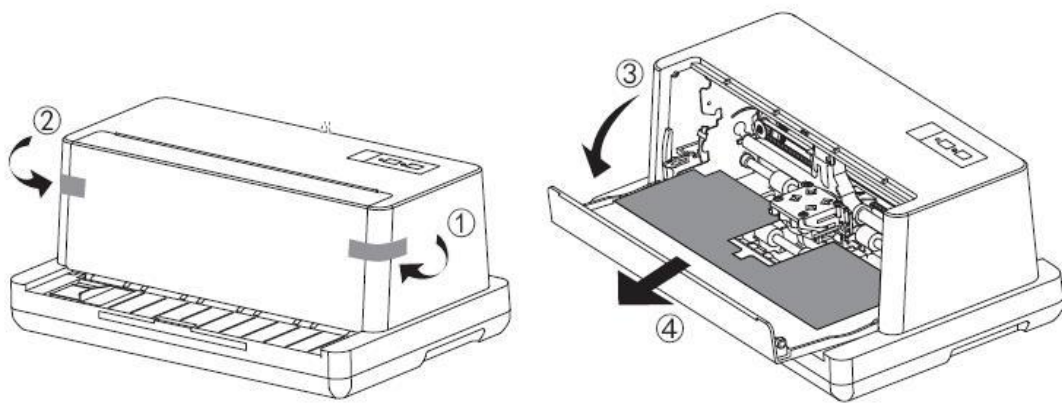
1.3

7. 配件清单

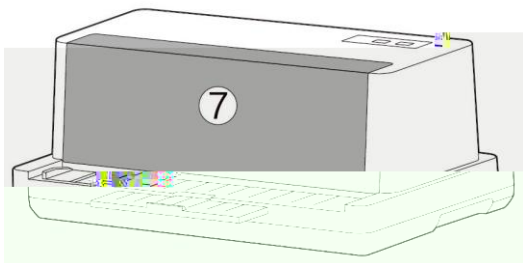
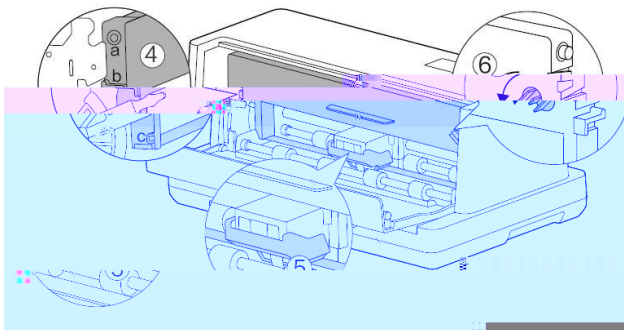
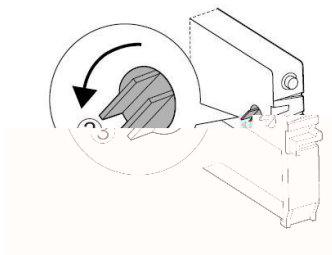
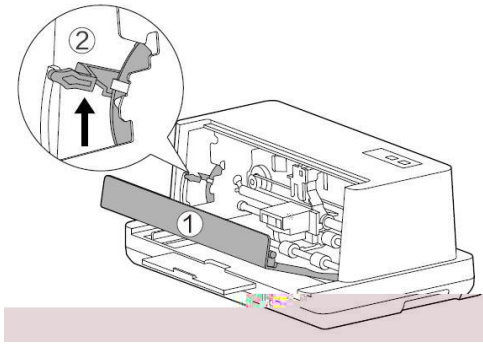


1.4

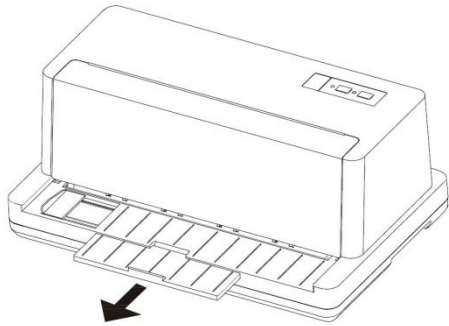
1.4.1



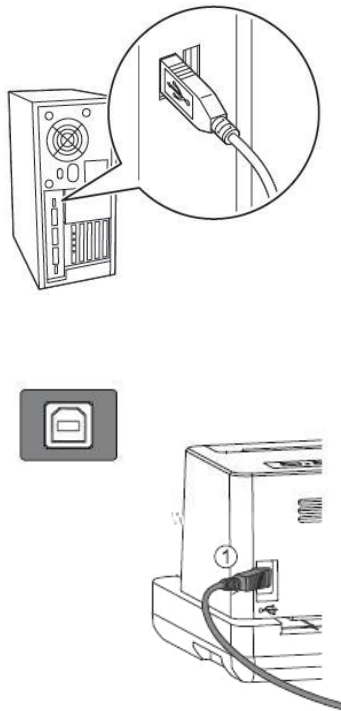
1.4.2



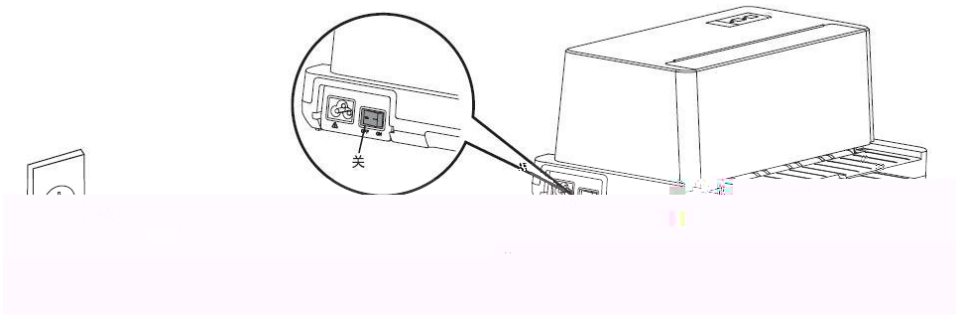
1.4.3



1.4.4



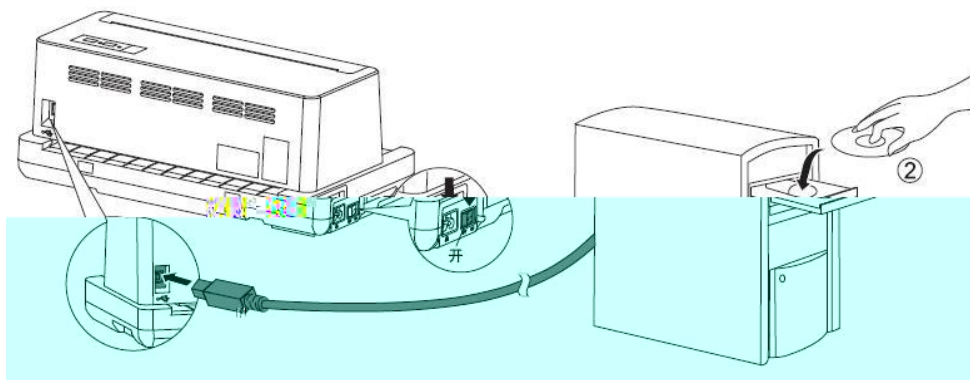
1.4.5



- | | |
|----|---|
| 1. | 5 |
| 2. | |

1.4.6

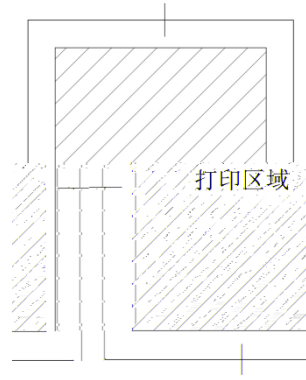
Windows XP / Vista / 7 / 8 / 10



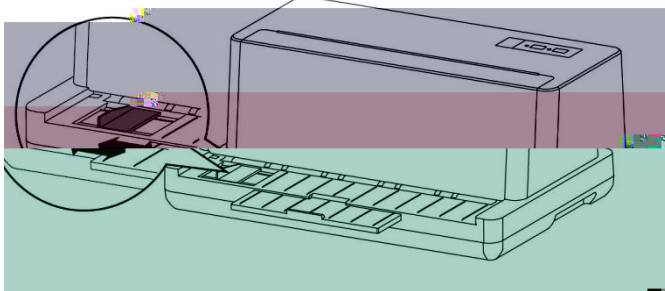
a. [DeliDriver.exe](#)

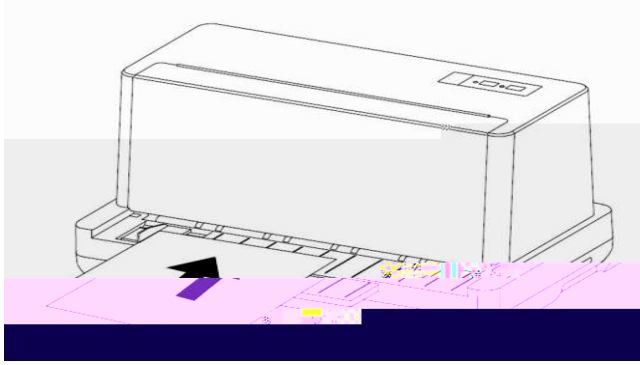
2.1

2.1.1



2.2

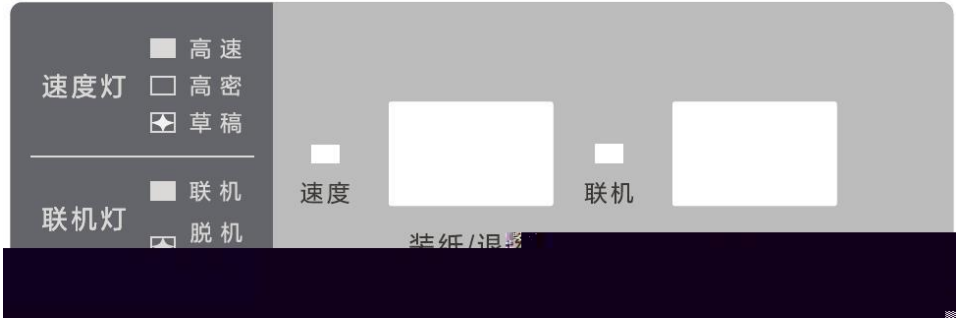




2.3

	2	+1
	3	+2
	4	+3
	5	+4
	6	+5





3.1

■





3.2

3.2.1



3.2.2



3.2.3

3.3

■

■

■

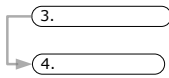
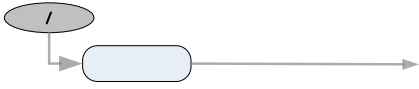
■

■



4.1





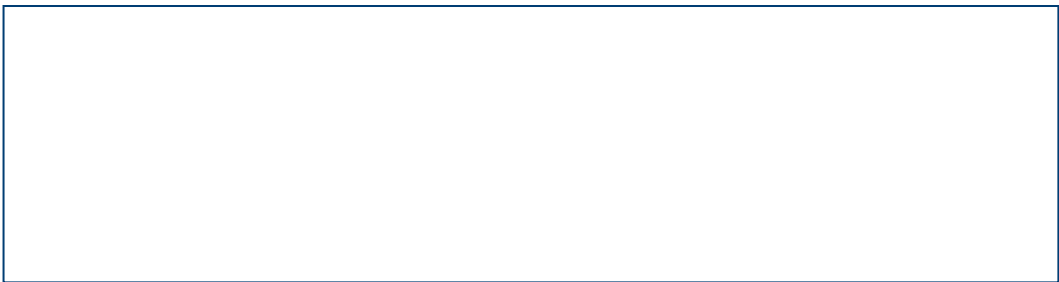
4.2

4.2.1



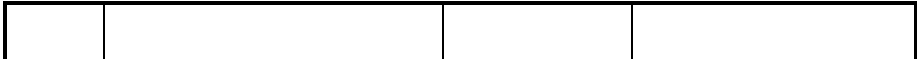
①

②



4.2.3

4.2.4



--	--

5.3

-
-
-



1

产品中有害物质的名称及含量

部件名称	有害物质					
	铅(Pb)	汞(Hg)	镉(Cd)	六价铬 (Cr(VI))	多溴联苯 (PBB)	多溴二苯醚 (PBDE)
电线	○	○	○	○	○	○
印刷电路板	○	○	○	○	○	○
塑胶	○	○	○	○	○	○
轴, 金属轴	○	○	×	○	○	○
五金	○	○	○	○	○	○
其他金属	○	○	○	○	○	○

本表格依据SJ/T 11364的规定编制。

◎表示该有害物质在该部件所有均质材料中的含量均在GB/T 26572规定的限量要求以下。

×表示该有害物质在该部件的均质材料中的含量超出GB/T 26572规定的限量要求。